

SEE DETAIL 4 ON SHT 4 FOR TOP BLADE TO SIDE JAMB

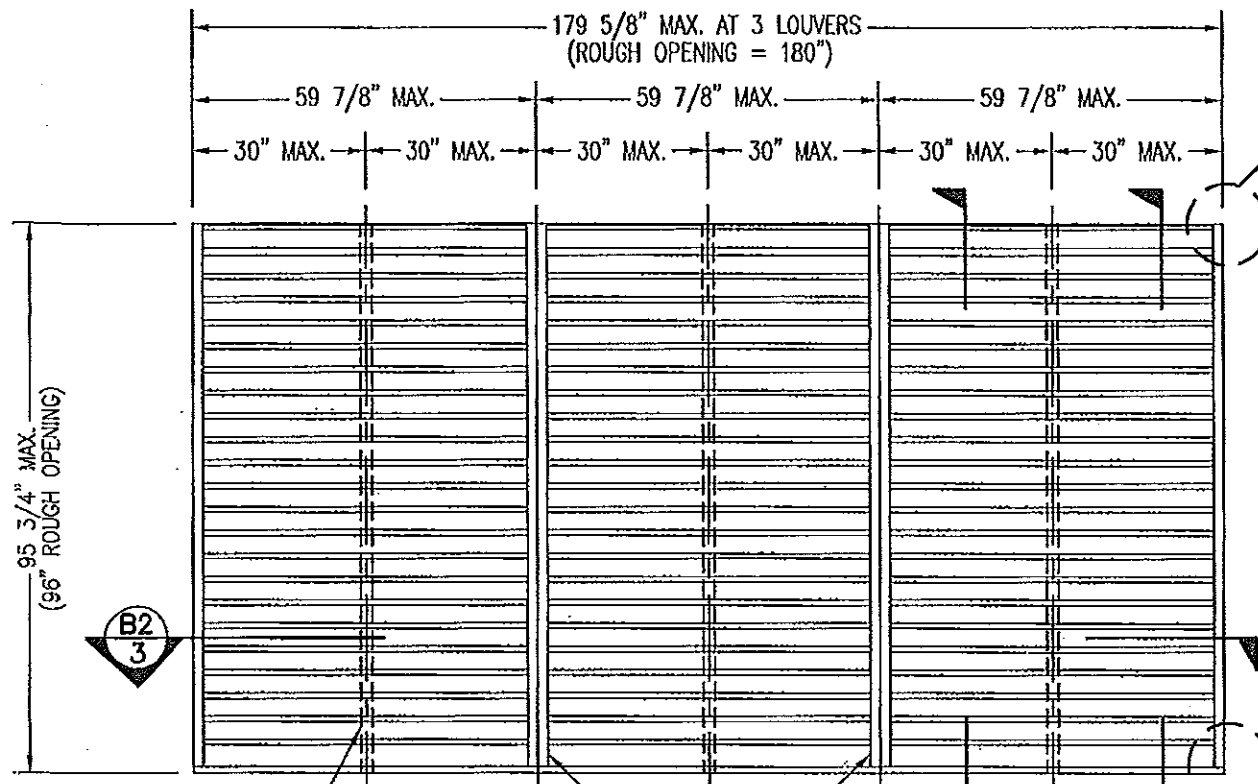
SEE CORNER DETAIL ON THIS SHEET.

HIDDEN LINES ARE FOR SUPPORT ANGLES AT BACK SIDE OF LOUVERS.

**EXTERIOR ELEVATION ARCHITECTURAL 6" LOUVER**

SCALE: 3/8"=1'-0"

NOTE: THIS LOUVER SYSTEM MAY CONSIST OF AN UNLIMITED NUMBER OF SECTIONS PROVIDING EACH SECTION DOES NOT EXCEED 59 7/8" X 95 3/4" IN SIZE.



SEE DETAIL 4 ON SHT 4 FOR TOP BLADE TO SIDE JAMB

HIDDEN LINES ARE FOR SUPPORT ANGLES AT BACK SIDE OF LOUVERS.

VERTICAL MULLION (REF.)

**EXTERIOR ELEVATION NON-ARCHITECTURAL 6" LOUVER**

SCALE: 3/8"=1'-0"

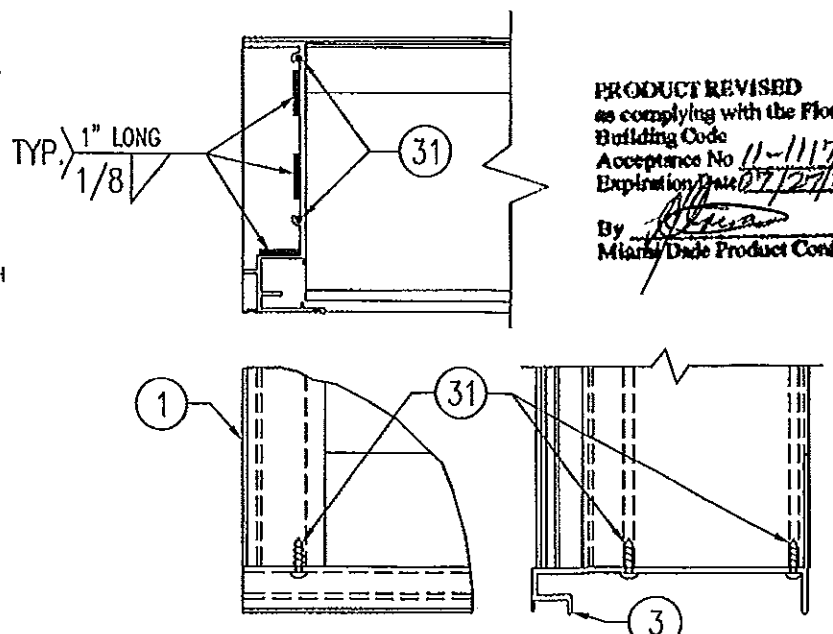
NOTE: THIS LOUVER SYSTEM MAY CONSIST OF AN UNLIMITED NUMBER OF SECTIONS PROVIDING EACH SECTION DOES NOT EXCEED 59 7/8" X 95 3/4" IN SIZE.

MAX. ALLOWABLE DESIGN WIND PRESSURE	
POSITIVE	NEGATIVE
150 PSF	150 PSF

NOTE: SEE LOAD TABLE ON SHEET 7 FOR VARIATIONS OF PRESSURES WITH RESPECT TO PANEL WIDTH & CLIP SPACING.

**GENERAL NOTES:**

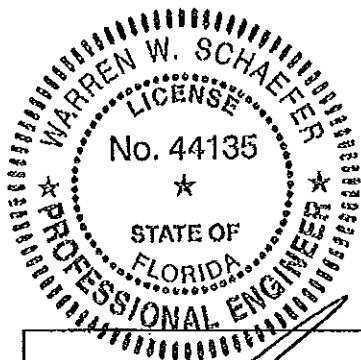
1. THESE LOUVER SYSTEMS HAVE BEEN TESTED, ANALYZED & APPROVED FOR DESIGN PRESSURES NOT TO EXCEED THOSE SHOWN IN THE "ALLOWABLE DESIGN PRESSURE TABLE(S)".
2. OPENINGS MUST BE PROPERLY DESIGNED & CONSTRUCTED TO TRANSFER WIND LOADS TO THE STRUCTURE.
3. ALL HARDWARE & FASTENERS SHALL BE IN ACCORDANCE WITH THESE DRAWINGS & SHALL NOT VARY UNLESS SPECIFICALLY MENTIONED ON THE DRAWINGS. SPECIFIED ANCHOR EMBED TO BASE MATERIAL SHALL BE BEYOND WALL FINISH OR STUCCO.
4. THE DETAILS & SPECIFICATIONS SHOWN HEREIN REPRESENT THE PRODUCTS TESTED & PROPOSED FOR IMPACT, CYCLIC & UNIFORM STATIC AIR PRESSURE TESTING IN CONFORMANCE WITH THE FLORIDA BUILDING CODE PROTOCOLS TAS-201, 202 & 203 FOR LARGE MISSILE IMPACT LOUVERS.
5. THESE LOUVER SYSTEMS HAVE BEEN DESIGNED IN ACCORDANCE WITH AND MEET THE REQUIREMENTS OF THE FLORIDA BUILDING CODE (FBC) INCLUDING HIGH VELOCITY HURRICANE ZONES (HVHZ).
6. ALL ANCHORS SECURING LOUVER FRAME TO PRESSURE TREATED BUCKS OR WOOD FRAMING SHALL BE CAPABLE OF RESISTING CORROSION CAUSED BY THE PRESSURE TREATING CHEMICALS IN THE WOOD.
7. DETERMINE THE POSITIVE & NEGATIVE DESIGN LOADS TO USE WHEN REFERENCING THESE DOCUMENTS IN ACCORDANCE WITH THE GOVERNING CODE AND GOVERNING WIND VELOCITY. FOR WIND LOAD CALCULATIONS IN ACCORDANCE WITH THE FLORIDA BUILDING CODE, A DIRECTIONALITY FACTOR OF  $K_d = 0.85$  MAY BE APPLIED PER THE ASCE 7 STANDARD.
8. NO INCREASE IN ALLOWABLE STRESS HAS BEEN USED IN THE CERTIFICATION OF THIS PRODUCT. WIND LOAD DURATION FACTOR  $C_d = 1.6$  WAS USED FOR WOOD SCREW ANALYSIS ONLY.
9. MATERIALS, INCLUDING BUT NOT LIMITED TO STEEL SCREWS, THAT COME INTO CONTACT WITH OTHER DISSIMILAR MATERIALS SHALL MEET THE REQUIREMENTS OF FLORIDA BUILDING CODE CHAPTER 20.
10. MAXIMUM ALLOWABLE INDIVIDUAL PANEL SIZE = 59 7/8" X 95 3/4".
11. MAXIMUM ASSEMBLY SIZE = UNLIMITED WIDTH; UP TO 95 3/4" HEIGHT.
12. ASSEMBLIES/SECTIONS MAY BE STACKED VERTICALLY PROVIDING A STRUCTURAL SUPPORT IS DESIGNED & INSTALLED BY OTHERS TO SUPPORT ALL LOADS TRANSFERRED FROM THE LOUVER ASSEMBLY.
13. MAXIMUM UNSUPPORTED BLADE LENGTH SHALL NOT EXCEED 30"
14. ALL FASTENERS SHALL BE PLATED STEEL OR 304 STAINLESS STEEL.
15. SPECIFIED SUBSTRATES REQUIREMENTS:  
 CONCRETE: MIN. 3000 PSI  
 MASONRY: MIN. C90 CMU  
 WOOD: MIN. GRADE 2;  $G = 0.55$   
 STEEL: MIN. 1/8" THICK A36 (36 KSI)
16. THIS SYSTEM HAS NOT BEEN TESTED FOR WATER INFILTRATION RESISTANCE & IS NOT A WATER RESISTANT SYSTEM.



**SILL CORNER DETAIL**

PRODUCT RENEWED as complying with the Florida Building Code  
 Acceptance No 13-0922-03  
 Expiration Date 07/27/2013  
 By [Signature]  
 Miami Dade Product Control

THESE DRAWINGS ARE APPLICABLE ONLY TO THE PRODUCT SPECIFIED. THEY MAY NOT BE USED FOR THE ASSEMBLY AND/OR INSTALLATION OF ANY OTHER PRODUCT NOR MAY THEY BE USED FOR RATIONAL AND/OR LOCAL APPROVAL OF ANY PRODUCT NOT PRODUCED BY THE MANUFACTURER STATED ON THESE DRAWINGS.



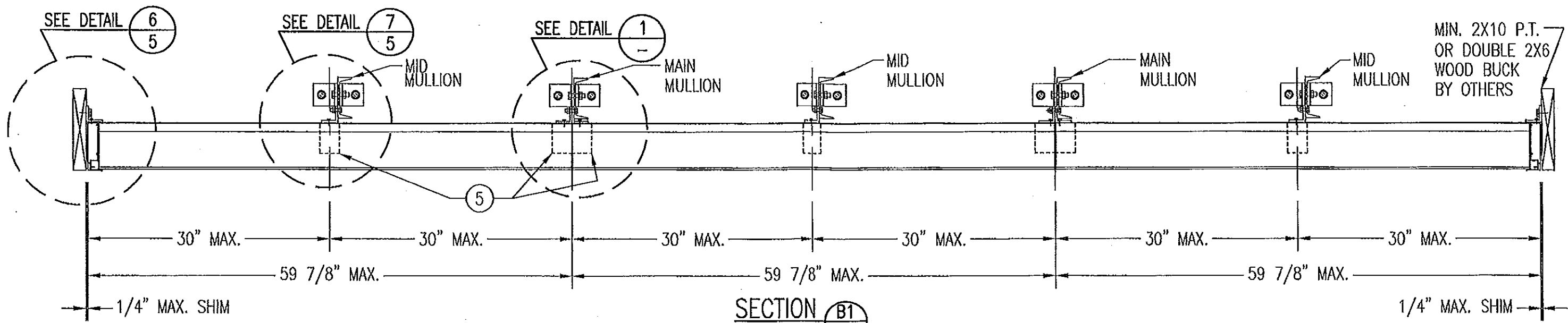
NOV 08 2011  
 WARREN W. SCHAEFER, P.E.  
 STRUCTURAL ENGINEER  
 F.E. No. 44135  
 W. W. SCHAEFER ENGINEERING & CONSULTING, P.A. (CA 6809)  
 STRUCTURAL CONSULTING ENGINEERS  
 7480 150TH COURT NORTH  
 PALM BEACH GARDENS, FL 33418  
 PHONE: 561-744-3424

REVISION	DATE	DRN	CHK
C1 UPDATE TO CURRENT STANDARDS	11/08/11	WRU	
B1 UPDATE FOR CODE COMPLIANCE	04/17/08	WRU	
A1 UPDATE GENERAL NOTES TO 2004 FBC COMPLIANT	08/23/05	WWS	

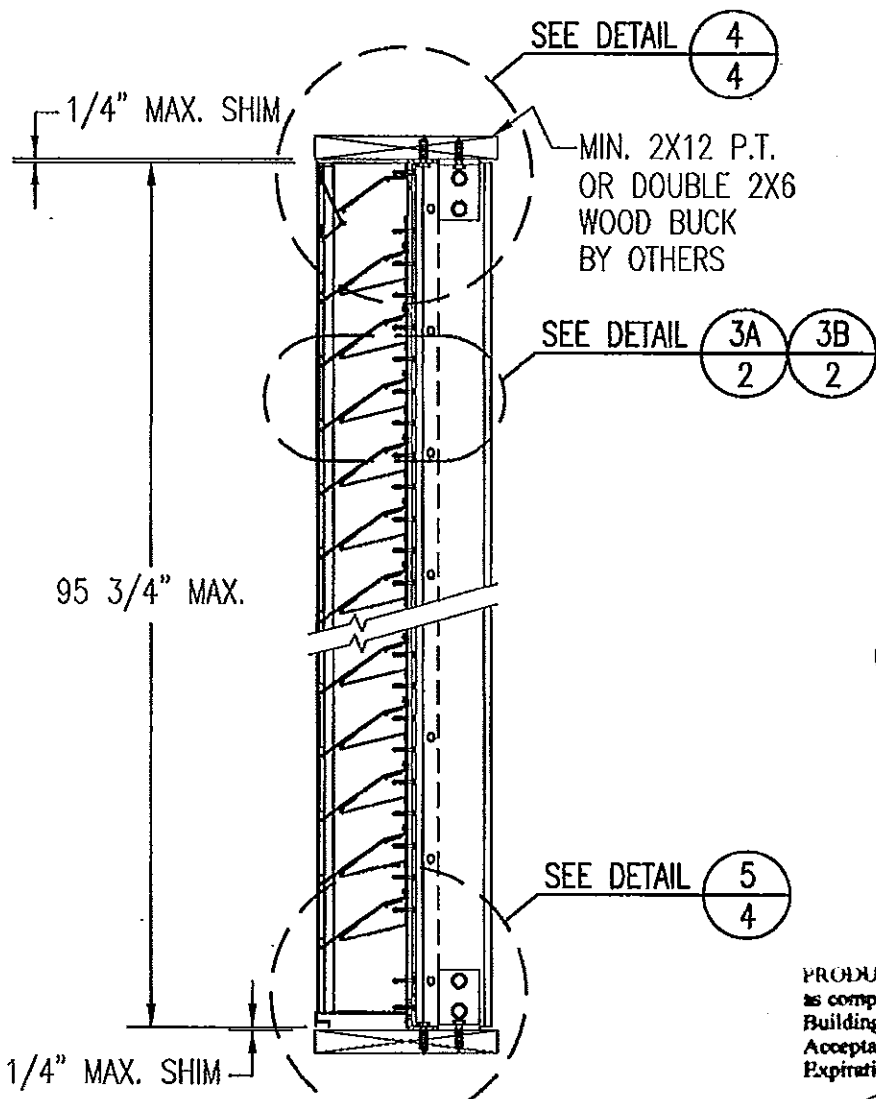
**ARROW UNITED INDUSTRIES**  
 A Division of Mestek, Inc.  
 450 RIVERSIDE DRIVE - P.O. BOX 69  
 WYALUSING, PA 18853  
 PHONE 570-746-1888; FAX 570-746-9286

**EA-32 TEST LOUVER**  
**ARCHITECTURAL & NON-ARCHITECTURAL LOUVER**  
**ELEVATIONS & NOTES**

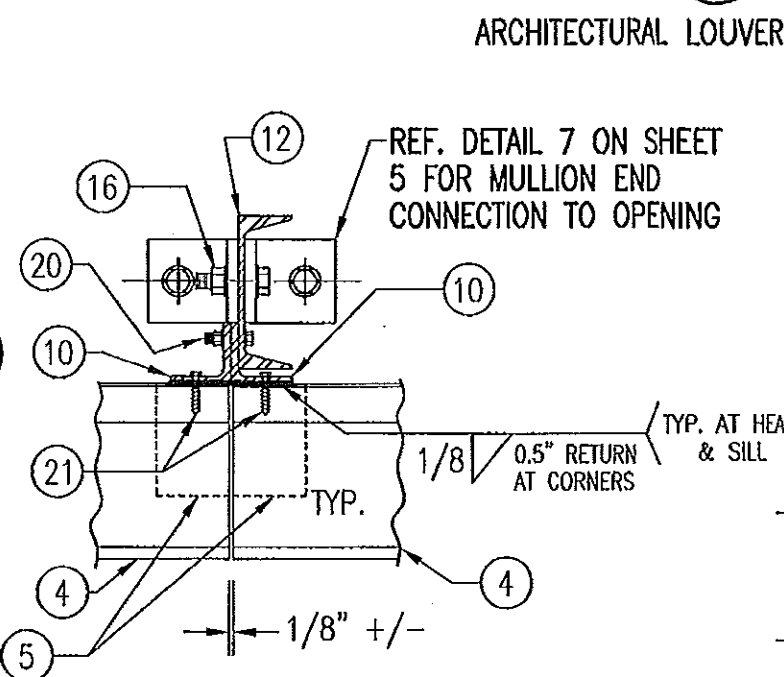
CKD.BY	APPD.BY W.W.S.	SHEET: 1 of 7
DRN.BY W.W.S.	DWG. NO. 35972-6	REV. C
DATE 06-18-00		



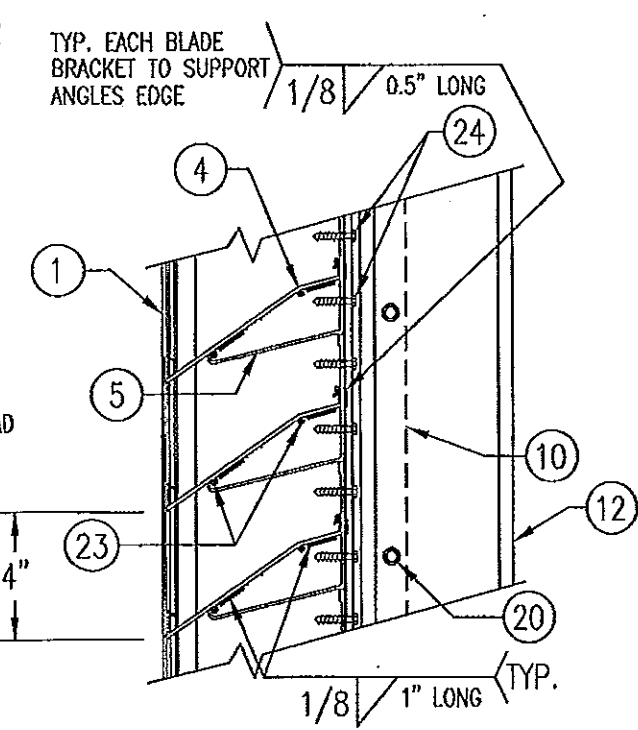
**SECTION B1**  
SCALE: 1"=1'-0"  
ARCHITECTURAL LOUVER



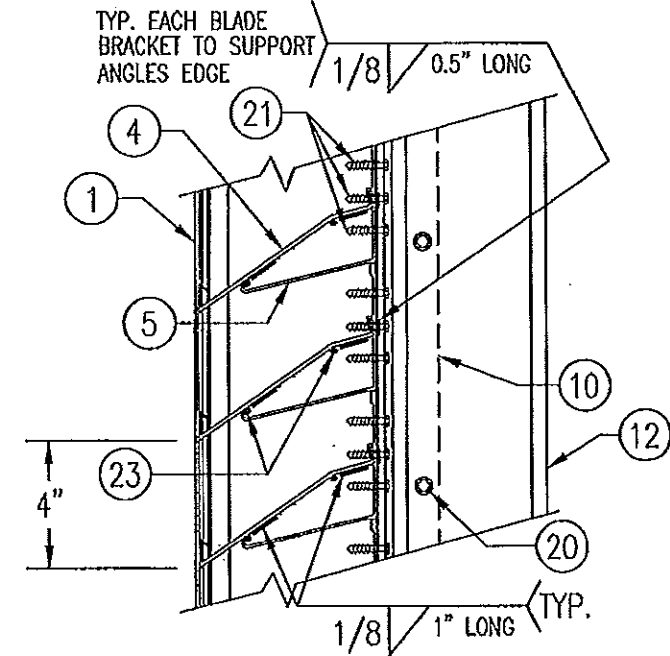
**SECTION A1**  
SCALE: 1"=1'-0"  
ARCHITECTURAL LOUVER



**DETAIL 1**  
SCALE: 2"=1'-0"  
ARCHITECTURAL LOUVER



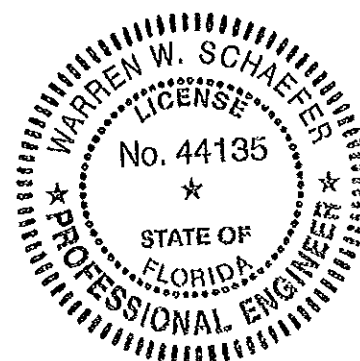
**DETAIL 3A**  
SCALE: 2"=1'-0"  
TYP. AT ALL MID SPAN MULLIONS



**DETAIL 3B**  
SCALE: 2"=1'-0"  
TYP. AT ALL MAIN ARCHITECTURAL MULLIONS

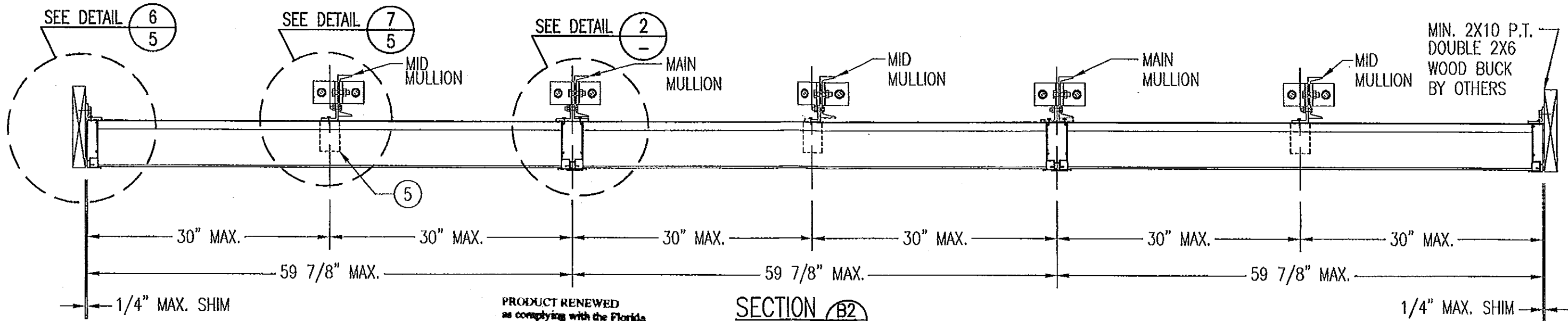
PRODUCT RENEWED  
as complying with the Florida  
Building Code  
Acceptance No. 13-0422-08  
Expiration Date 07/27/2018  
By *[Signature]*  
Miami Dade Product Control

PRODUCT REVISED  
as complying with the Florida  
Building Code  
Acceptance No. 11-1117-06  
Expiration Date 07/27/2013  
By *[Signature]*  
Miami Dade Product Control



NOV 08 2011  
WARREN W. SCHAEFER, P.E.  
STRUCTURAL ENGINEER  
P.E. No. 44135  
W. W. SCHAEFER ENGINEERING  
& CONSULTING, P.A. (CA 6809)  
STRUCTURAL CONSULTING ENGINEERS  
7480 150TH COURT NORTH  
PALM BEACH GARDENS, FL 33418  
PHONE: 561-744-3424

REVISION	DATE	DRN	CK	APPD
 ARROW UNITED INDUSTRIES A Division of Mastek, Inc. 450 RIVERSIDE DRIVE - P.O. BOX 89 WYALUSING, PA 18853 PHONE 570-746-1888; FAX 570-746-9286				
<b>EA-32 TEST LOUVER</b> ARCHITECTURAL LOUVER SECTIONS & DETAILS				
CKD. BY	APPD. BY	W.W.S.	SHEET: 2 of 7	
DRN. BY	W.W.S.	DWG. NO.	35972-6	
DATE	06-16-00		REV.	C

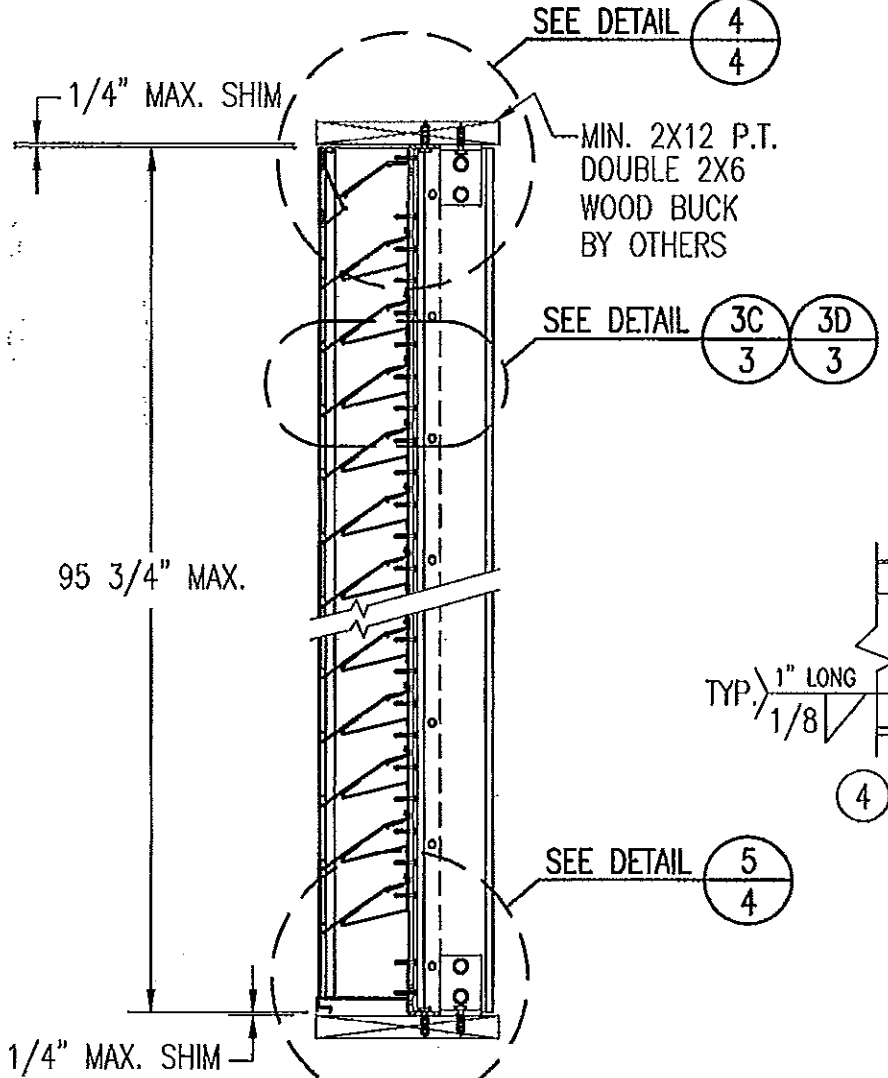


PRODUCT RENEWED  
 as complying with the Florida  
 Building Code  
 Acceptance No. 13-0422-08  
 Expiration Date 07/27/2018  
 By *[Signature]*  
 Miami Dade Product Control

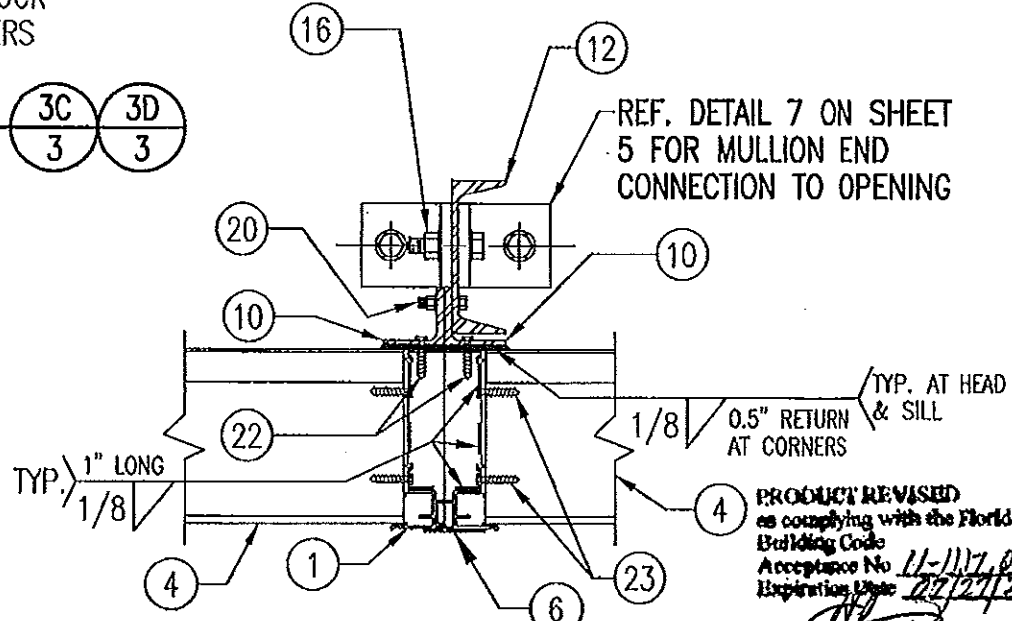
**SECTION B2**  
 SCALE: 1"=1'-0"  
**NON-ARCHITECTURAL LOUVER**

TYP. EA. BLADE  
 TO SUPPORT  
 ANGLES EDGE 1/8" 0.5" LONG

TYP. EACH BLADE  
 BRACKET TO SUPPORT  
 ANGLES EDGE 1/8" 0.5" LONG



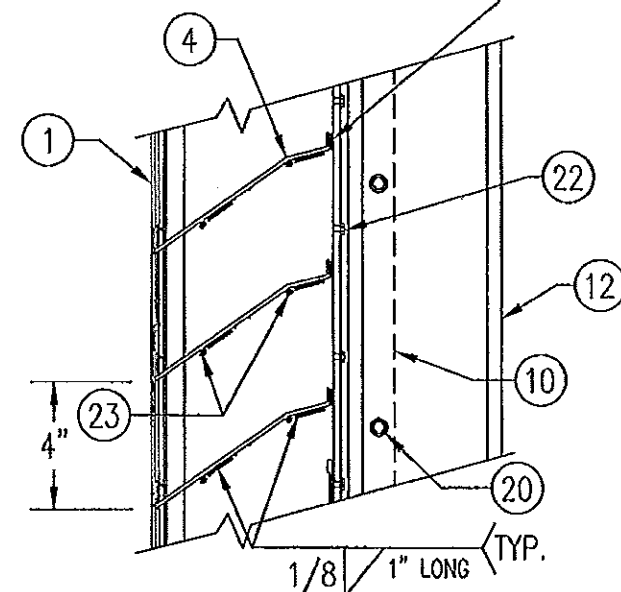
**SECTION A2**  
 SCALE: 1"=1'-0"  
**NON-ARCHITECTURAL LOUVER**



**DETAIL 2**  
 SCALE: 2"=1'-0"

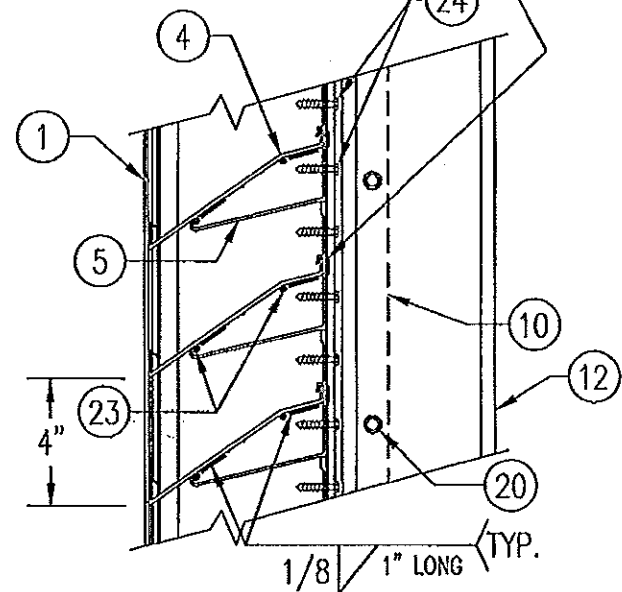
**NON-ARCHITECTURAL LOUVER**  
 NOTE: SIDE JAMBS ARE ADDITIONALLY  
 FASTENED TO THE SILL WITH 2 NO.  
 8 X 3/4" SMS THROUGH SILL &  
 INTO JAMB SPLINES.

PRODUCT REVISED  
 as complying with the Florida  
 Building Code  
 Acceptance No. 11-1117-06  
 Expiration Date 07/27/2013  
 By *[Signature]*  
 Miami Dade Product Control



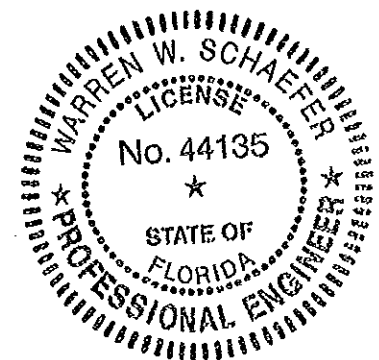
**DETAIL 3C**  
 SCALE: 2"=1'-0"

TYP. AT ALL MAIN NON-ARCHITECTURAL MULLIONS



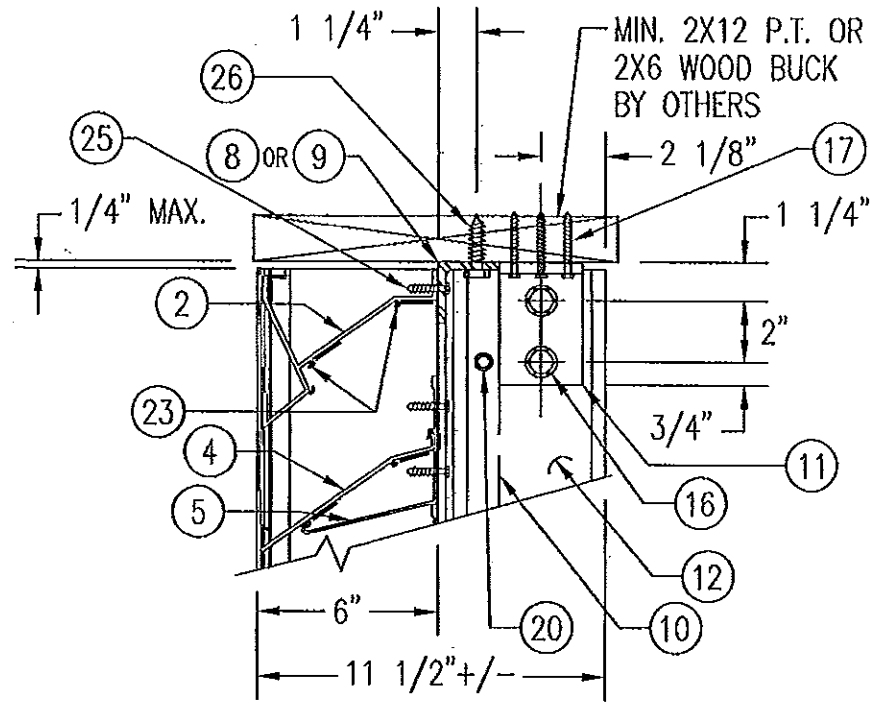
**DETAIL 3D**  
 SCALE: 2"=1'-0"

TYP. AT ALL MID SPAN MULLIONS



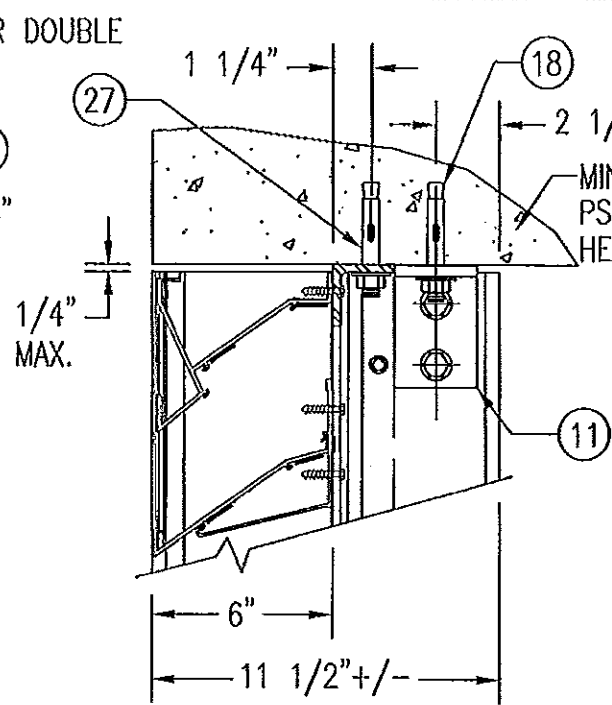
NOV 08 2011  
 WARREN W. SCHAEFER, P.E.  
 STRUCTURAL ENGINEER  
 P.E. No. 44135  
 W. W. SCHAEFER ENGINEERING  
 & CONSULTING, P.A. (CA 6809)  
 STRUCTURAL CONSULTING ENGINEERS  
 7480 150TH COURT NORTH  
 PALM BEACH GARDENS, FL 33418  
 PHONE: 561-744-3424

REVISION	DATE	DRN	CHK	APPD
<b>ARROW UNITED INDUSTRIES</b> A Division of Mestek, Inc.				
450 RIVERSIDE DRIVE - P.O. BOX 69 WYALUSING, PA 18853 PHONE 570-746-1888; FAX 570-746-9286				
<b>EA-32 TEST LOUVER</b> <b>NON-ARCHITECTURAL LOUVER</b> <b>SECTIONS &amp; DETAILS</b>				
CKD.BY	APPD.BY	W.W.S.	SHEET: 3 of 7	
DRN.BY	W.W.S.	DWG. NO.	35972-6	
DATE	06-16-00	REV.	C	



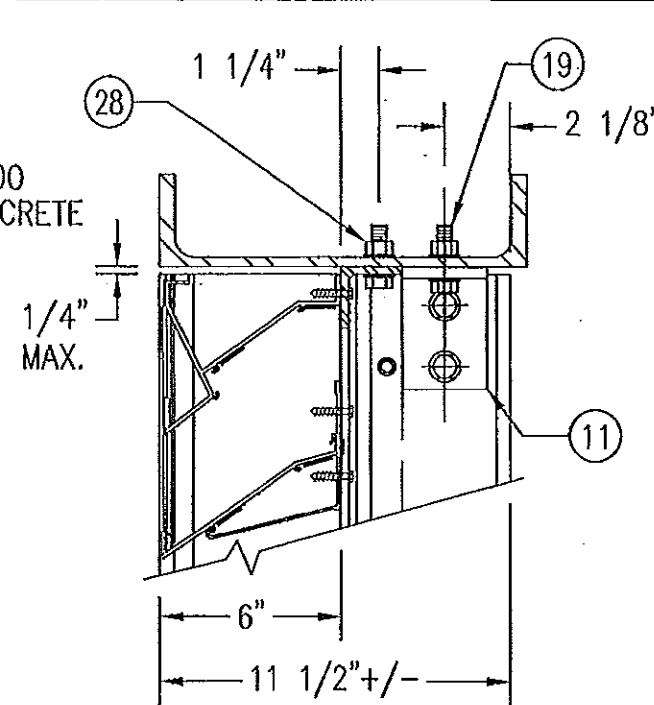
**WOOD FRAMED OPENING**

SEE "DETAIL 3A & 3B" FOR LOUVER BLADE DETAILS



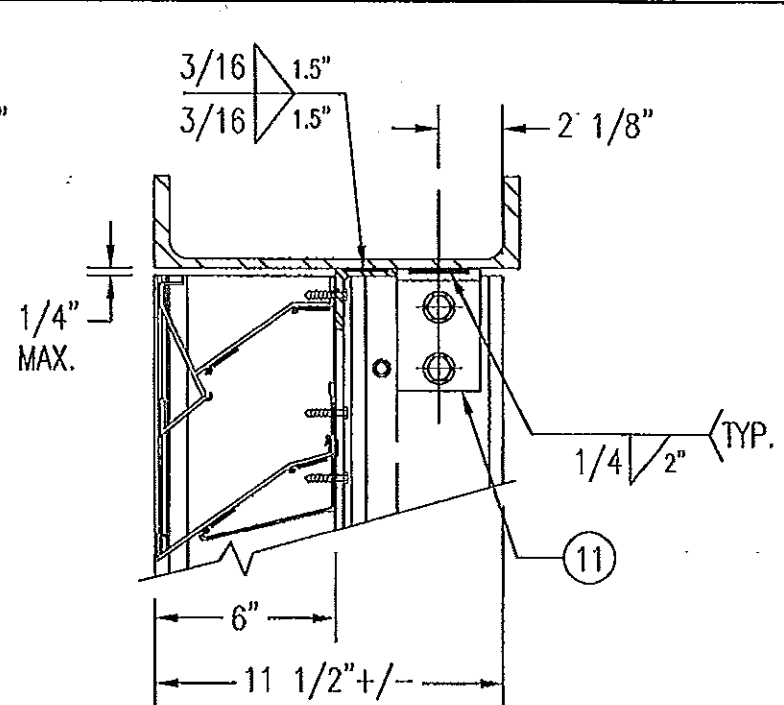
**CONCRETE HEAD**

SEE "WOOD OPENING" FOR DETAIL NOT SHOWN (MASONRY ACCEPTABLE AT SIDES ONLY AND MAY NOT BE USED AT HEAD OR SILL)



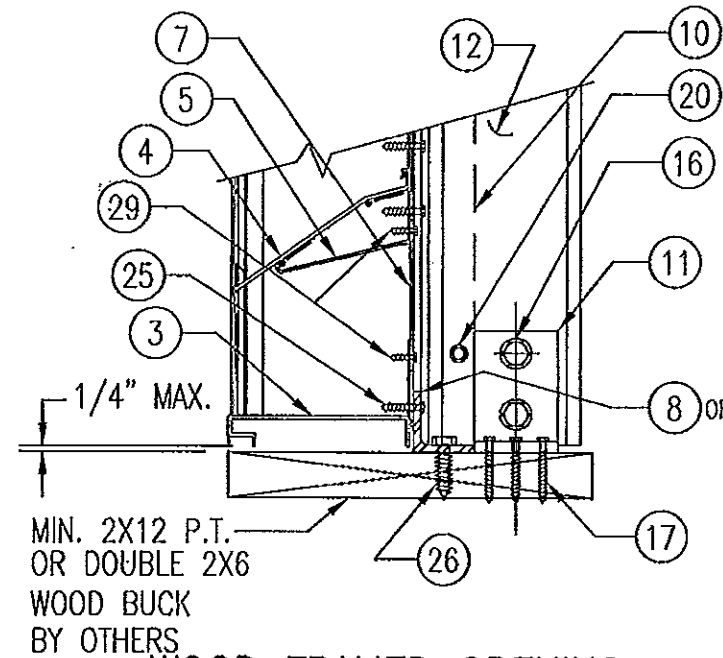
**STEEL FRAME OPENING (BOLTED)**

SEE "WOOD OPENING" FOR DETAIL NOT SHOWN



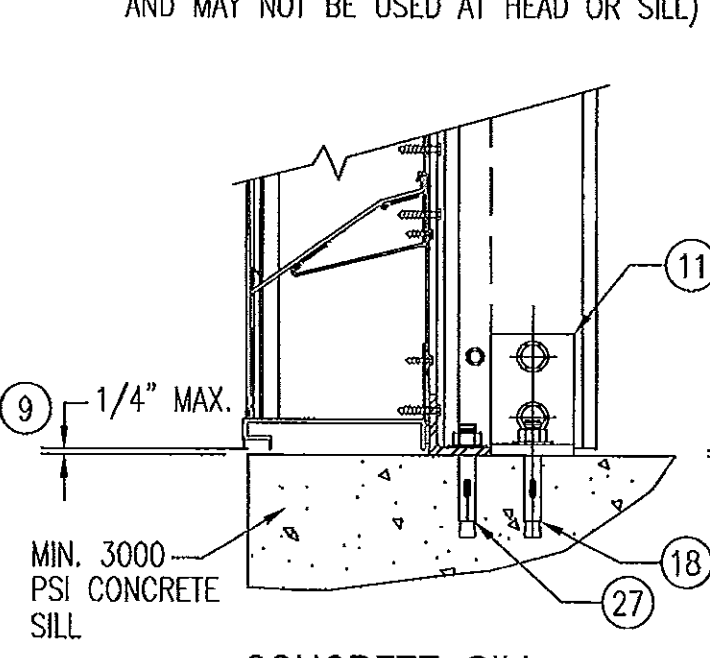
**STEEL FRAME OPENING (WELDED)**

SEE "WOOD OPENING" FOR DETAIL NOT SHOWN



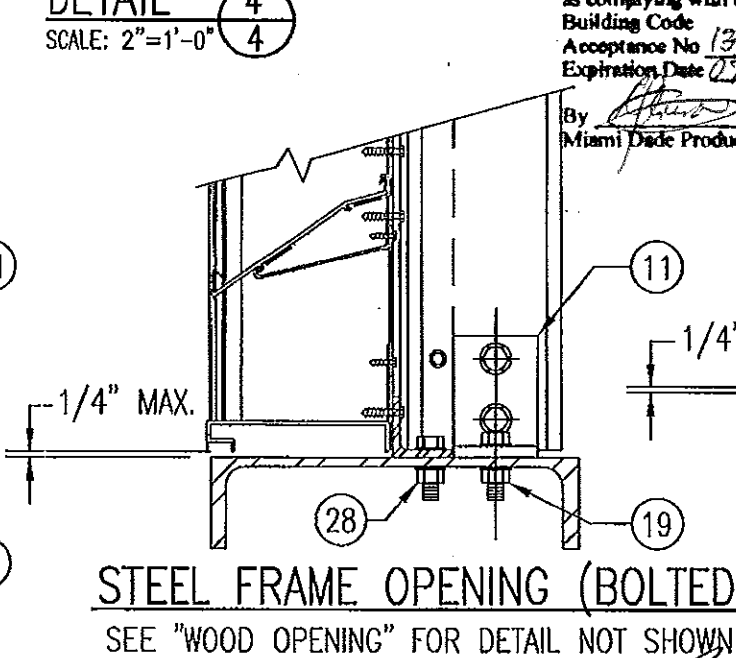
**WOOD FRAMED OPENING**

SEE "DETAIL 3A & 3B" FOR LOUVER BLADE DETAILS



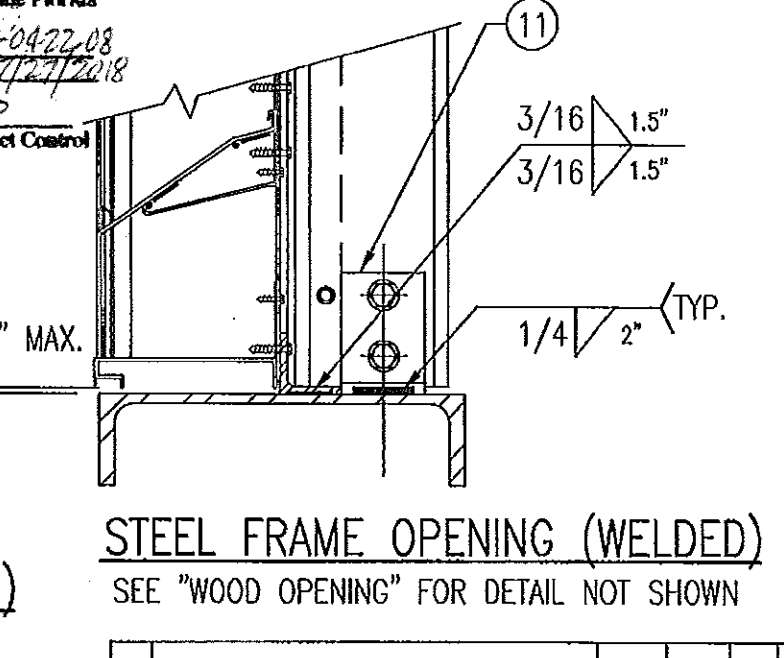
**CONCRETE SILL**

SEE "WOOD OPENING" FOR DETAIL NOT SHOWN (MASONRY ACCEPTABLE AT SIDES ONLY AND MAY NOT BE USED AT HEAD OR SILL)



**STEEL FRAME OPENING (BOLTED)**

SEE "WOOD OPENING" FOR DETAIL NOT SHOWN



**STEEL FRAME OPENING (WELDED)**

SEE "WOOD OPENING" FOR DETAIL NOT SHOWN

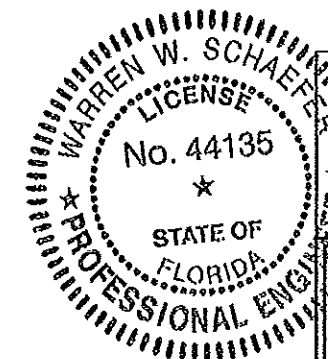
**DETAIL 4**  
SCALE: 2"=1'-0"

PRODUCT REVISED  
as complying with the Florida  
Building Code  
Acceptance No 13-0422-08  
Expiration Date 07/27/2018  
By *[Signature]*  
Miami Dade Product Control

PRODUCT REVISED  
as complying with the Florida  
Building Code  
Acceptance No 11-117-06  
Expiration Date 07/27/2013  
By *[Signature]*  
Miami Dade Product Control

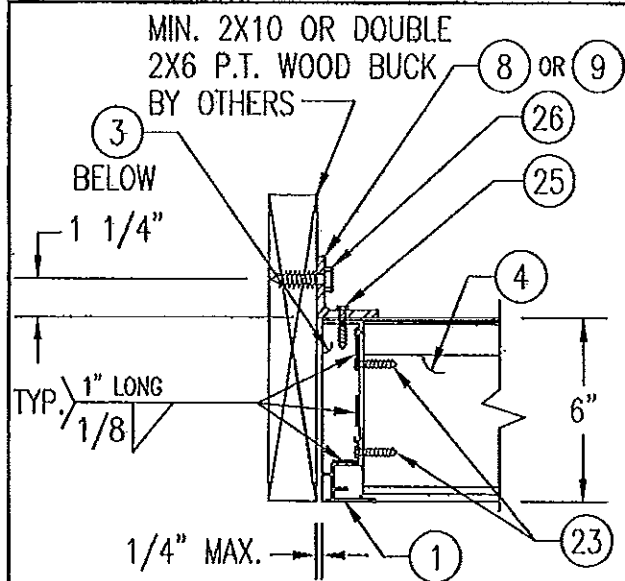
MASONRY MAY ONLY BE USED AT SIDES  
OF LOUVER PANELS & MAY NOT BE USED  
AT THE HEAD OR SILL.

**DETAIL 5**  
SCALE: 2"=1'-0"

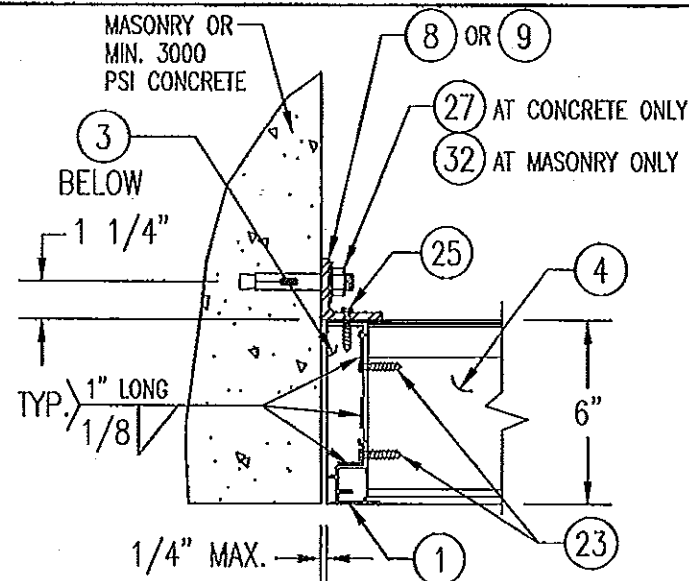


NOV 08 2011  
WARREN W. SCHAEFER, P.E.  
STRUCTURAL ENGINEER  
P.E. No. 44135  
W. W. SCHAEFER ENGINEERING  
& CONSULTING, P.A. (CA 6809)  
STRUCTURAL CONSULTING ENGINEERS  
7480 150TH COURT NORTH  
PALM BEACH GARDENS, FL 33418  
PHONE: 561-744-3424

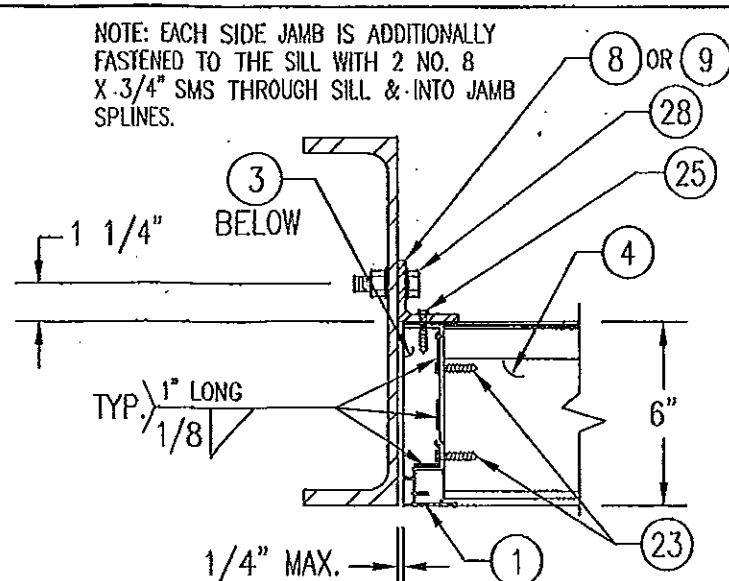
REVISION	DATE	DRN	CK	APPD
<b>ARROW UNITED INDUSTRIES</b> A Division of Mestek, Inc. 450 RIVERSIDE DRIVE - P.O. BOX 69 WYALUSING, PA 18853 PHONE 570-748-1888; FAX 570-746-9286 EA-32 TEST LOUVER ARCHITECTURAL & NON-ARCHITECTURAL LOUVER DETAILS				
CKD.BY	APPD.BY	W.W.S.		
DRN.BY	W.W.S.	DWG. NO.		
DATE	06-16-00	35972-6		
				SHEET: 4 of 7
				REV. C



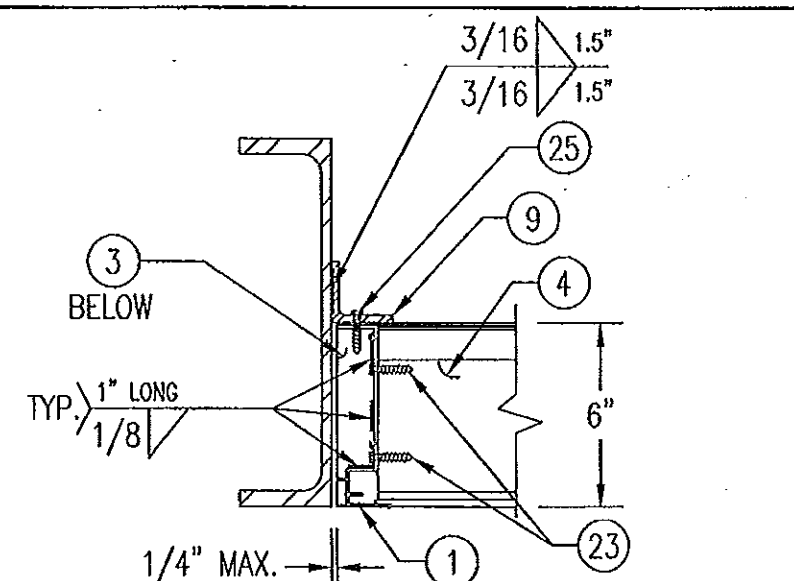
**WOOD FRAMED OPENING**



**CONCRETE/MASONRY OPENING**



**STEEL FRAME OPENING (BOLTED)**

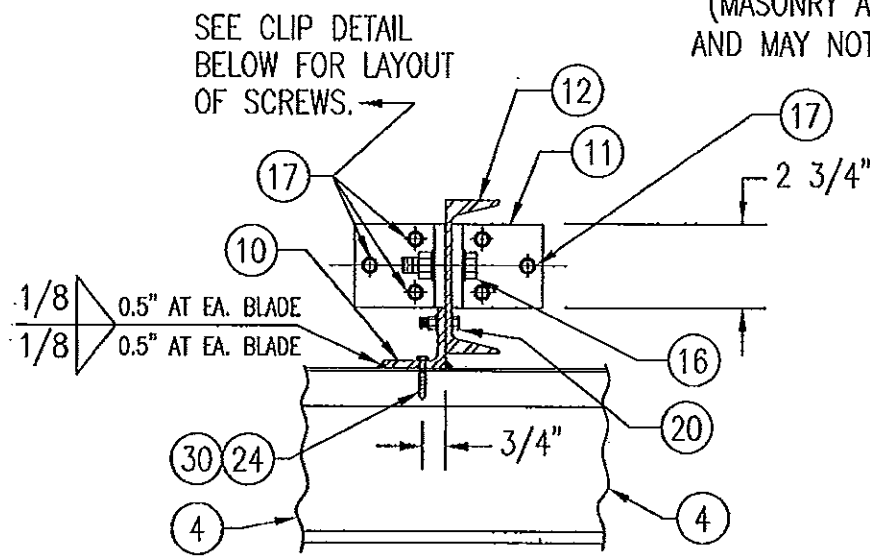


**STEEL FRAME OPENING (WELDED)**

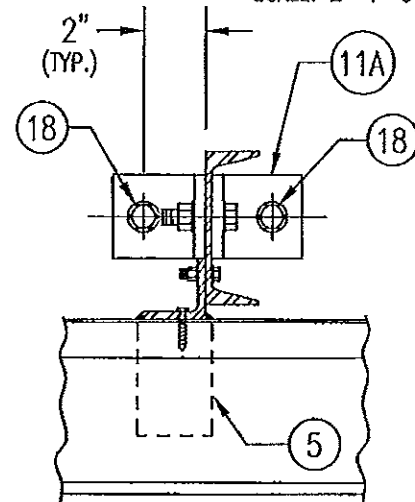
NOTE: EACH SIDE JAMB IS ADDITIONALLY FASTENED TO THE SILL WITH 2 NO. 8 X 3/4" SMS THROUGH SILL & INTO JAMB SPLINES.

(MASONRY ACCEPTABLE AT SIDES ONLY AND MAY NOT BE USED AT HEAD OR SILL)

**DETAIL 6**  
SCALE: 2"=1'-0"

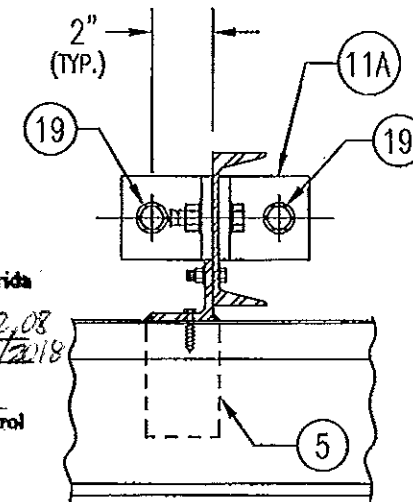


**WOOD FRAMED OPENING**



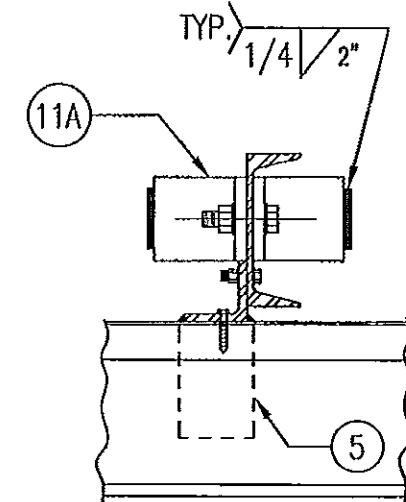
**CONCRETE HEAD & SILL**

SEE "WOOD OPENING" FOR DETAIL NOT SHOWN (MASONRY ACCEPTABLE AT SIDES ONLY AND MAY NOT BE USED AT HEAD OR SILL)



**STEEL FRAME OPENING (BOLTED)**

SEE "WOOD OPENING" FOR DETAIL NOT SHOWN



**STEEL FRAME OPENING (WELDED)**

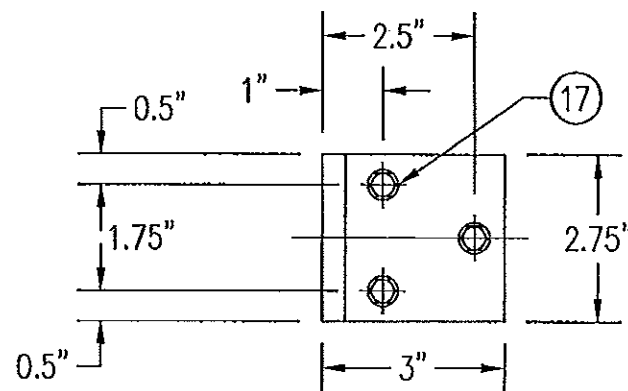
SEE "WOOD OPENING" FOR DETAIL NOT SHOWN

PRODUCT RENEWED as complying with the Florida Building Code Acceptance No 13-0422-08 Expiration Date 07/27/2018 By [Signature] Miami Dade Product Control

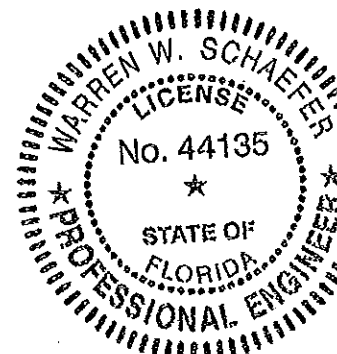
PRODUCT REVISED as complying with the Florida Building Code Acceptance No 11-1117-06 Expiration Date 07/27/2013 By [Signature] Miami Dade Product Control

**DETAIL 7**  
SCALE: 2"=1'-0"

MASONRY MAY ONLY BE USED AT SIDES OF LOUVER PANELS & MAY NOT BE USED AT THE HEAD OR SILL.

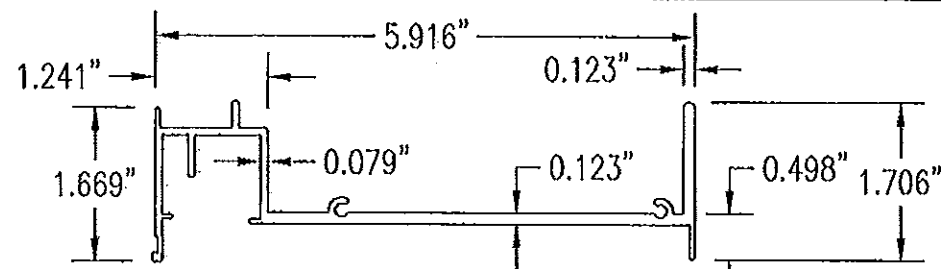


**MULLION CLIP DETAIL @ WOOD INSTALLATION**

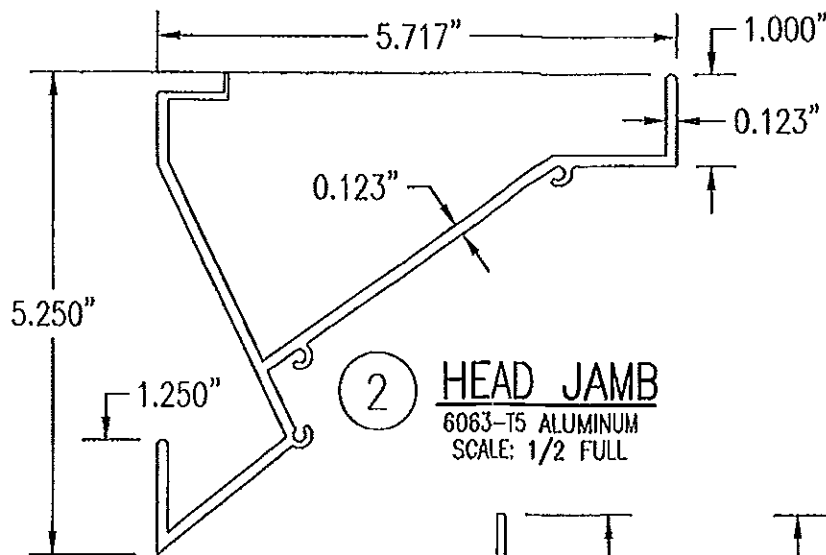


NOV 08 2011  
WARREN W. SCHAEFER, P.E.  
STRUCTURAL ENGINEER  
P.E. No. 44135  
W. W. SCHAEFER ENGINEERING & CONSULTING, P.A. (CA 6809)  
STRUCTURAL CONSULTING ENGINEERS  
7480 150TH COURT NORTH  
PALM BEACH GARDENS, FL 33418  
PHONE: 561-744-3424

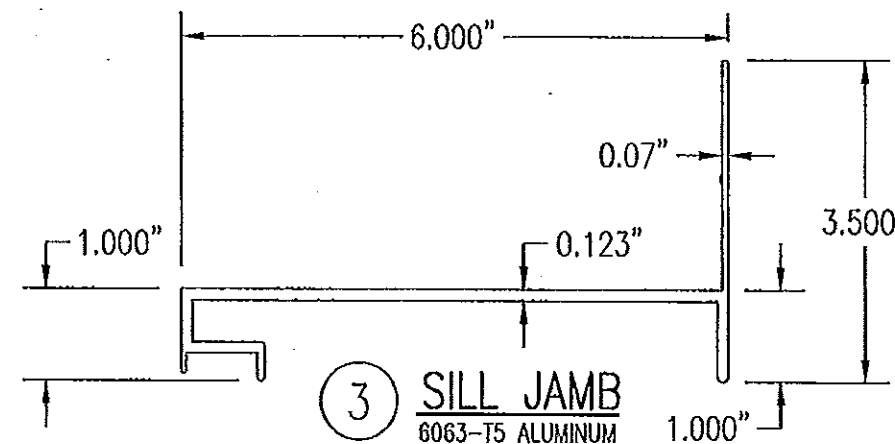
REVISION	DATE	DRN	CK	APPD
<b>ARROW UNITED INDUSTRIES</b> A Division of Mestek, Inc. 450 RIVERSIDE DRIVE - P.O. BOX 69 WYALUSING, PA 18853 PHONE 570-746-1888; FAX 570-746-9288 <b>EA-32 TEST LOUVER</b> <b>ARCHITECTURAL &amp; NON-ARCHITECTURAL LOUVER</b> <b>DETAILS</b>				
CKD.BY	APPD.BY	W.W.S.	SHEET: 5 of 7	
DRN.BY	W.W.S.	DWG. NO.	35972-6	
DATE	06-16-00	REV.	C	



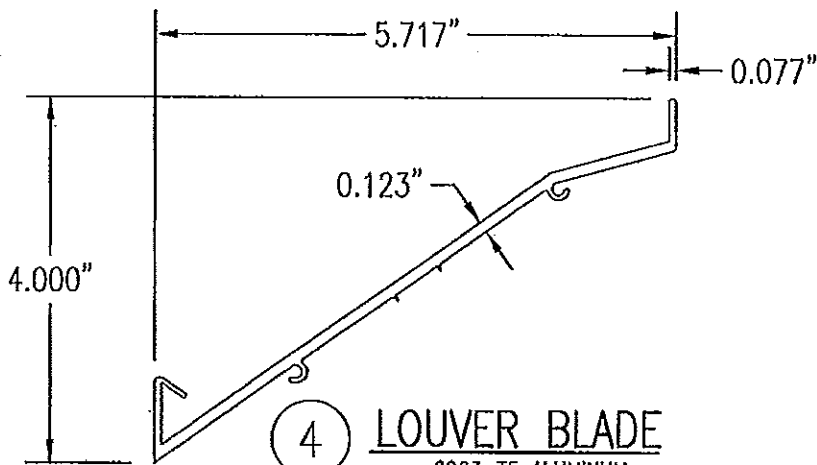
① **JAMB EXTRUSION**  
6063-T5 ALUMINUM  
SCALE: 1/2 FULL



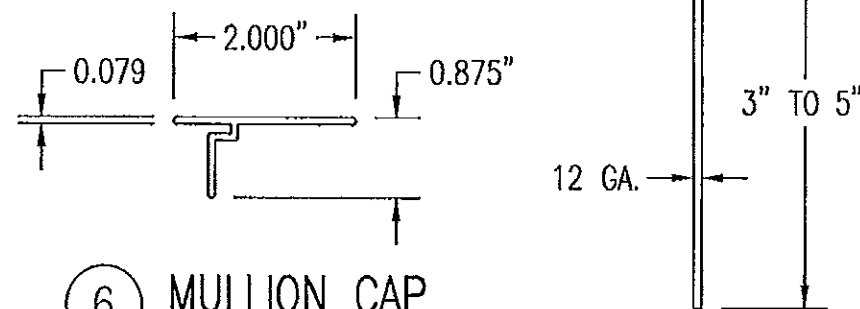
② **HEAD JAMB**  
6063-T5 ALUMINUM  
SCALE: 1/2 FULL



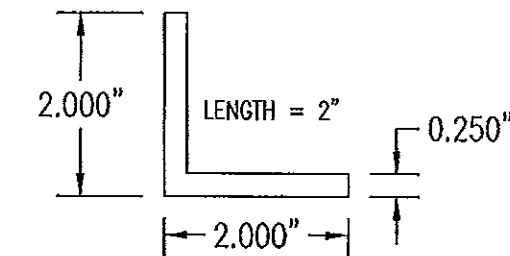
③ **SILL JAMB**  
6063-T5 ALUMINUM  
SCALE: 1/2 FULL



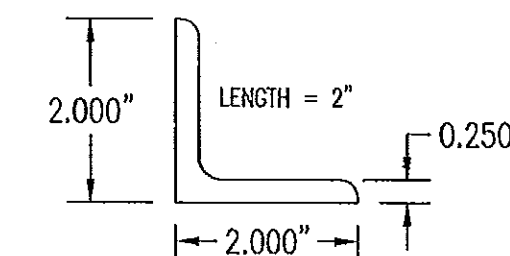
④ **LOUVER BLADE**  
6063-T5 ALUMINUM  
SCALE: 1/2 FULL



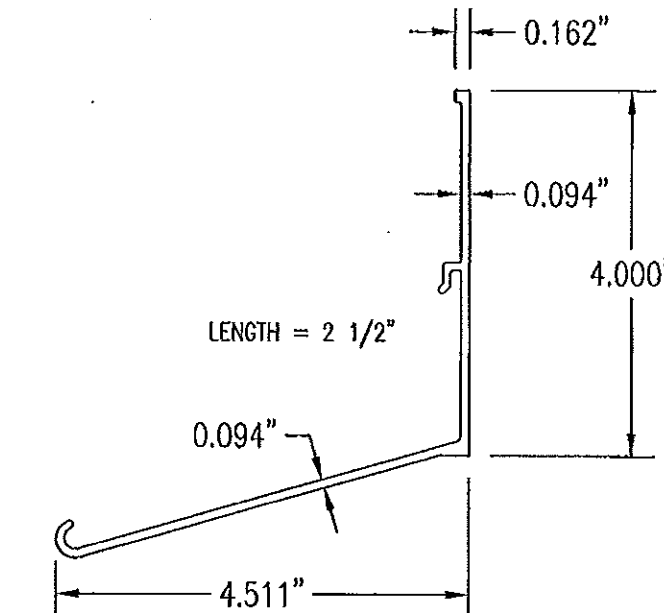
⑥ **MULLION CAP**  
6063-T5 ALUMINUM  
SCALE: 1/2 FULL



⑧ **CONNECTION ANGLE**  
6063-T5 ALUMINUM  
SCALE: 1/2 FULL

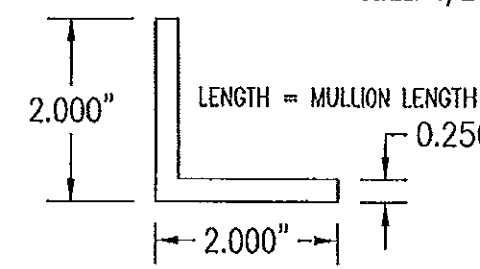


⑨ **CONNECTION ANGLE**  
A36 STEEL  
SCALE: 1/2 FULL



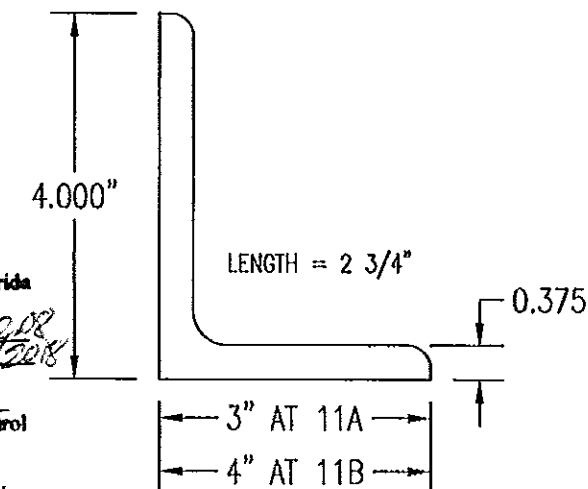
⑤ **BLADE SUPPORT BRACKET**  
6063-T5 ALUMINUM  
SCALE: 1/2 FULL

⑦ **SILL PLATE**  
3003/5005 ALUMINUM  
SCALE: 1/2 FULL

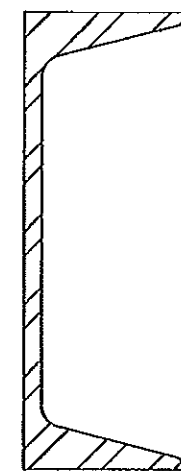


⑩ **MULLION ANGLE**  
6063-T5 ALUMINUM  
SCALE: 1/2 FULL

PRODUCT RENEWED  
as complying with the Florida  
Building Code  
Acceptance No. 13-042202  
Expiration Date 07/27/2018  
By *[Signature]*  
Miami Trade Product Control

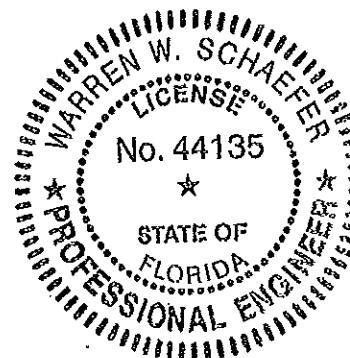


⑪A ⑪B **MULLION END CONNECTION ANGLE**  
A36 STEEL  
SCALE: 1/2 FULL



⑫ **C5X6.7 MULLION**  
A36 STEEL  
SCALE: 1/2 FULL

PRODUCT REVISED  
as complying with the Florida  
Building Code  
Acceptance No. 11-1117.06  
Expiration Date 07/27/2013  
By *[Signature]*  
Miami Trade Product Control



NOV 08 2011  
WARREN W. SCHAEFER, P.E.  
STRUCTURAL ENGINEER  
P.E. No. 44135  
W. W. SCHAEFER ENGINEERING  
& CONSULTING, P.A. (CA 6809)  
STRUCTURAL CONSULTING ENGINEERS  
7480 150TH COURT NORTH  
PALM BEACH GARDENS, FL 33418  
PHONE: 561-744-3424

REVISION		DATE	DRN	CHK	APPD
<b>ARROW UNITED INDUSTRIES</b> A Division of Mestek, Inc. 450 RIVERSIDE DRIVE -- P.O. BOX 89 WYALUSING, PA 18853 PHONE 570-746-1888; FAX 570-746-9286					
<b>EA-32 TEST LOUVER</b> ARCHITECTURAL & NON-ARCHITECTURAL LOUVER PARTS & EXTRUSIONS					
CKD.BY	APPD.BY	W.W.S.	SHEET: 6 of 7		
DRN.BY	W.W.S.	DWG. NO.	35972-6		
DATE	06-16-00	REV.	C		



**ALLOWABLE WIND PRESSURE VS. JAMB CLIP SPACING AND PANEL WIDTH**

PANEL WIDTH (INCHES)	CLIP SPACING (INCHES)	ALLOWABLE PRESSURE WITH MID SPAN MULLION (PSF)	ALLOWABLE PRESSURE WITHOUT MID SPAN MULLION (PSF)
16	8	150	150
	12	150	150
	16	150	140
	20	150	105
	24	150	70
20	8	150	150
	12	150	140
	16	150	112
	20	150	84
	24	150	56
24	8	150	140
	12	150	117
	16	150	93
	20	150	70
	24	125	47
28	8	150	82
	12	150	68
	16	150	54
	20	150	41
	24	107	27
30	8	150	62
	12	150	52
	16	150	41
	20	140	31
	24	93	-
36	8	150	-
	12	150	-
	16	150	-
	20	125	-
	24	83	-
42	8	150	-
	12	150	-
	16	142	-
	20	107	-
	24	71	-
48	8	150	-
	12	150	-
	16	125	-
	20	93	-
	24	62	-
54	8	150	-
	12	138	-
	16	111	-
	20	83	-
	24	55	-
60	8	150	-
	12	125	-
	16	100	-
	20	75	-
	24	50	-

**MATERIAL LIST**

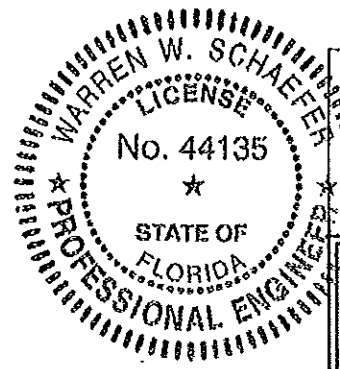
NO.	DESCRIPTION	NOTES/SPECIFICATIONS
PARTS/EXTRUSIONS		
1	SIDE JAMB FRAME/MULLION	6063-T5 ALUMINUM
2	HEAD FRAME	6063-T5 ALUMINUM
3	SILL FRAME	6063-T5 ALUMINUM
4	LOUVER BLADE	6063-T5 ALUMINUM
5	BLADE SUPPORT BRACKET (2 1/2" LONG)	6063-T5 ALUMINUM
6	MULLION CAP	6063-T5 ALUMINUM; FULL LENGTH OF MULLION JAMBS
7	SILL PLATE	3003/5005 ALUMINUM; FULL LENGTH OF PANEL SILL
8	L2X2X1/4 JAMB CONNECTION ANGLE 2" LONG	6063-T5 ALUMINUM; WITHIN 4" OF JAMB ENDS & SPACED PER LOAD TABLE ON THIS SHEET
9	L2X2X1/4 OPTIONAL JAMB CONNECTION ANGLE 2" LONG	A36 STEEL; WITHIN 4" OF JAMB ENDS & SPACED PER LOAD TABLE ON THIS SHEET
10	L2X2X1/4 CONTINUOUS MULLION CONNECTION ANGLE	6063-T5 ALUMINUM; FULL LENGTH OF CHANNEL MULLION
11	L4X3X3/8 MULLION END CONNECTION ANGLE 2 3/4" LONG	A36 STEEL; 2 PER MULLION END
12	C5X6.7 MULLION	A36 STEEL; FULL HEIGHT OF PANELS
13	OPEN	
14	OPEN	
15	OPEN	
FASTENERS		
16	1/2" X 2" A307 HEX HEAD PLATED STEEL OR S/STL BOLT	WITH FLAT WASHERS, LOCK WASHER & NUT; 2 PER MULLION END
17	NO. 14 S.S. SMS SCREWS	3 PER MULLION END CLIP WITH MIN. 1 1/2" WOOD EMBED
18	5/8" X 2 1/4" SLEEVE ANCHOR WITH FLAT WASHER	USA KINGPIN ANCHOR; 1 PER CHANNEL END CONNECTION ANGLE INTO CONCRETE ONLY
19	1/2" X 2" A307 HEX HEAD PLATED STEEL OR S/STL BOLT	WITH FLAT WASHERS, LOCK WASHER & NUT; 1 PER CHANNEL END CONNECTION ANGLE INTO STEEL FRAME
20	5/16-18 UNC X 1 1/2" HEX HEAD STEEL OR S/STL BOLT	WITH FLAT WASHER, LOCK WASHER & NUT; WITHIN 4" OF MULLION ENDS & MAX. 8" O.C.
21	NO. 14 X 1 1/4" HILTI TEK SCREW	3 AT EACH LOUVER BLADE SUPPORT BRACKET AT ARCHITECTURAL MAIN MULLIONS
22	NO. 14 X 1 1/4" HILTI TEK SCREW	WITHIN 1 1/4" OF MULLION ENDS & MAX. 4" O.C. INTO FRAME
23	NO. 8 X 3/4" SMS	2 PER EACH LOUVER BLADE END THROUGH JAMB & INTO BLADE SPLINES
24	NO. 14 X 1 1/4" HILTI TEK SCREW	2 AT EACH LOUVER BLADE SUPPORT BRACKET AT ALL MIDSPAN MULLIONS
25	NO. 14 X 1 1/4" HILTI TEK SCREW	2 PER EACH HEAD, SILL & SIDE JAMB CONNECTION ANGLE
26	1/2" X 2" LAG SCREW WITH FLAT WASHER	1 PER EACH HEAD, SILL & SIDE JAMB CONNECTION ANGLE INTO WOOD FRAME
27	5/8" X 2 1/4" SLEEVE ANCHOR WITH FLAT WASHER	USA KINGPIN ANCHOR; 1 PER EACH HEAD, SILL & SIDE JAMB CONNECTION ANGLE INTO CONCRETE ONLY
28	1/2" X 2" HEX HEAD A307 PLATED STEEL OR S/STL BOLT	WITH FLAT WASHERS, LOCK WASHER & NUT; 1 PER EA. JAMB CONNECTION ANGLE INTO STEEL FRAME
29	NO. 8 X 3/4" SMS	2 SCREWS WITHIN 4" OF SILL PLATE ENDS & MAX. 12" O.C. (SILL PLATE TO SILL JAMB AND FIRST LOUVER BLADE)
30	NO. 14 X 1 1/4" HILTI TEK SCREW	1 AT EACH MULLION ANGLE INTO HEAD & SILL JAMB
31	NO. 8 X 3/4" SMS SCREWS	2 PER FRAME SILL CORNER THROUGH SILL & INTO JAMB SPLINES
32	3/8" X 1 7/8" SLEEVE ANCHOR WITH FLAT WASHER	RED HEAD DYNABOLT WITH MIN. 1 1/2" BLOCK/CONCRETE EMBED (1 PER FRAME SUPPORT CLIP)

**PRODUCT RENEWED**  
 as complying with the Florida Building Code  
 Acceptance No. 13-0422-08  
 Expiration Date 07/27/2018  
 By *[Signature]*  
 Miami Dade Product Control

**PRODUCT REVISED**  
 as complying with the Florida Building Code  
 Acceptance No. 11-1117-06  
 Expiration Date 07/27/2013  
 By *[Signature]*  
 Miami Dade Product Control

**PRESSURE TABLE NOTES:**

1. WHEN THE PANEL WIDTH IS 30" OR LESS, NO MID SPAN MULLION IS REQUIRED PROVIDING COMPLIANCE WITH THE TABLE.
2. ALL PRESSURES IN THIS TABLE ARE FOR BOTH POSITIVE & NEGATIVE WIND PRESSURE.



NOV. 08 2011  
 WARREN W. SCHAEFER, P.E.  
 STRUCTURAL ENGINEER  
 P.E. No. 44135  
 W.W. SCHAEFER ENGINEERING & CONSULTING, P.A. (CA 6809)  
 STRUCTURAL CONSULTING ENGINEERS  
 7480 150TH COURT NORTH  
 PALM BEACH GARDENS, FL 33418  
 PHONE: 561-744-3424

REVISION	DATE	DRN	CK	APPD
<b>ARROW UNITED INDUSTRIES</b> A Division of Mestek, Inc. 450 RIVERSIDE DRIVE - P.O. BOX 69 WYALUSING, PA 18853 PHONE 570-746-1888; FAX 570-746-9286				
<b>EA-32 TEST LOUVER</b> <b>ARCHITECTURAL &amp; NON-ARCHITECTURAL LOUVER</b> <b>MATERIAL LIST &amp; LOAD TABLE</b>				
CKD.BY	APPD.BY	W.W.S.	SHEET: 7 of 7	
DRN.BY	W.W.S.	DWG. NO.	35972-6	
DATE	06-16-00	REV.	C	